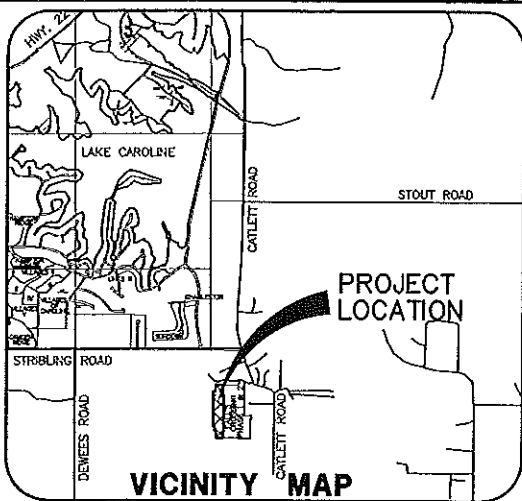


MEMO

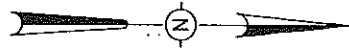
To: Madison County Board of Supervisors
From: Brad Sellers
Subject: Fall's Crossing Phase 3, preliminary plat
Date: November 21, 2013

The preliminary plat of Fall's Crossing, phase 3, meets all requirements of Planning and Zoning, and has been approved by the County Engineer.

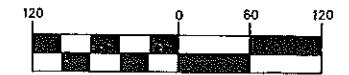


CENTERLINE CURVE DATA

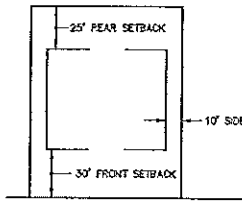
$\Delta = 111^{\circ}2'28''$
 $D = 19.03859'$
 $L = 300.00'$
 $E = 29.44'$
 $S = 58.66'$



GRAPHIC SCALE

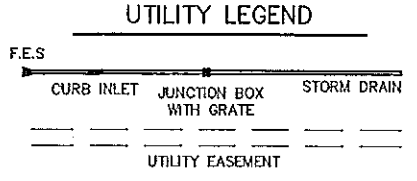
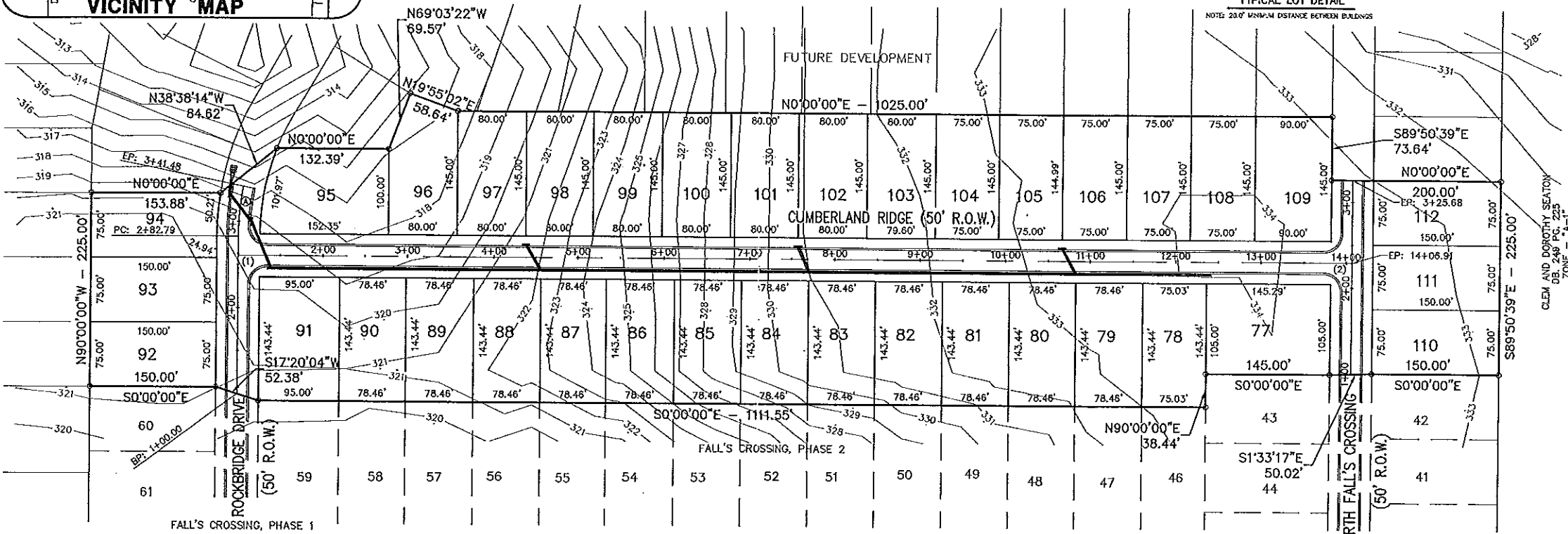


(IN FEET)



CENTERLINE INTERSECTIONS

- (1) STA. 2+60.69 ROCKBRIDGE DRIVE - STA. 1+00 STREET "A"
- (2) STA. 14+06.94 STREET "A" - STA. 2+29.32 STREET "B"



DEVELOPER
SSR, LLC
P.O. BOX 100
MADISON, MS 39130-0100
601-856-5510

NOTES:

1. DIMENSIONS ALONG CURVES ARE CHORD DISTANCES.
2. AREA = 11.577 ACRES (MORE OR LESS)
3. CONCRETE MONUMENTS WILL BE PLACED AT ALL CORNERS OF THE SUBDIVISION POST-CONSTRUCTION.
4. THIS SUBDIVISION LIES WITHIN THE LIMITS ESTABLISHED FOR ZONE "X" (NO SHADING) ACCORDING TO FIRM NUMBER 28089C0395 F, EFFECTIVE MARCH 17, 2010.
5. SANITARY SEWER COLLECTION SYSTEM AND WATER DISTRIBUTION SYSTEM ARE TO BE DESIGNED BY BEAR CREEK WATER ASSOCIATION.
6. FILTER FABRIC REQUIRED UNDER ALL RIP-RAP.
7. AT THE COMPLETION OF THE ROADWAYS, THE NEW DEAD ENDS OF ROCKBRIDGE DRIVE AND NORTH FALL'S CROSSING ARE REQUIRED TO HAVE TEMPORARY CUL-DE-SACS UPON FILING THE FINAL PLAT.

H D LANG AND ASSOCIATES, INC.

POST OFFICE BOX 16085 JACKSON, MISSISSIPPI 39236
 601-362-4886

CLIENT
 PRELIMINARY LAND DEVELOPMENT PLAN
 FOR
FALL'S CROSSING, PHASE 3

LOCATION
 SITUATED IN THE SW 1/4 OF THE SW 1/4 OF SECTION 18
 AND THE NW 1/4 OF NW 1/4 OF SECTION 19
 TOWNSHIP 8 NORTH, RANGE 2 EAST
 MADISON COUNTY, MISSISSIPPI

DATE	REVISION	BY	DRAWN BY: JSH
			DATE: 08-27-13
			SCALE:
			BOOK: PAGE:
			PROJECT NO.: 05-054

SHEET